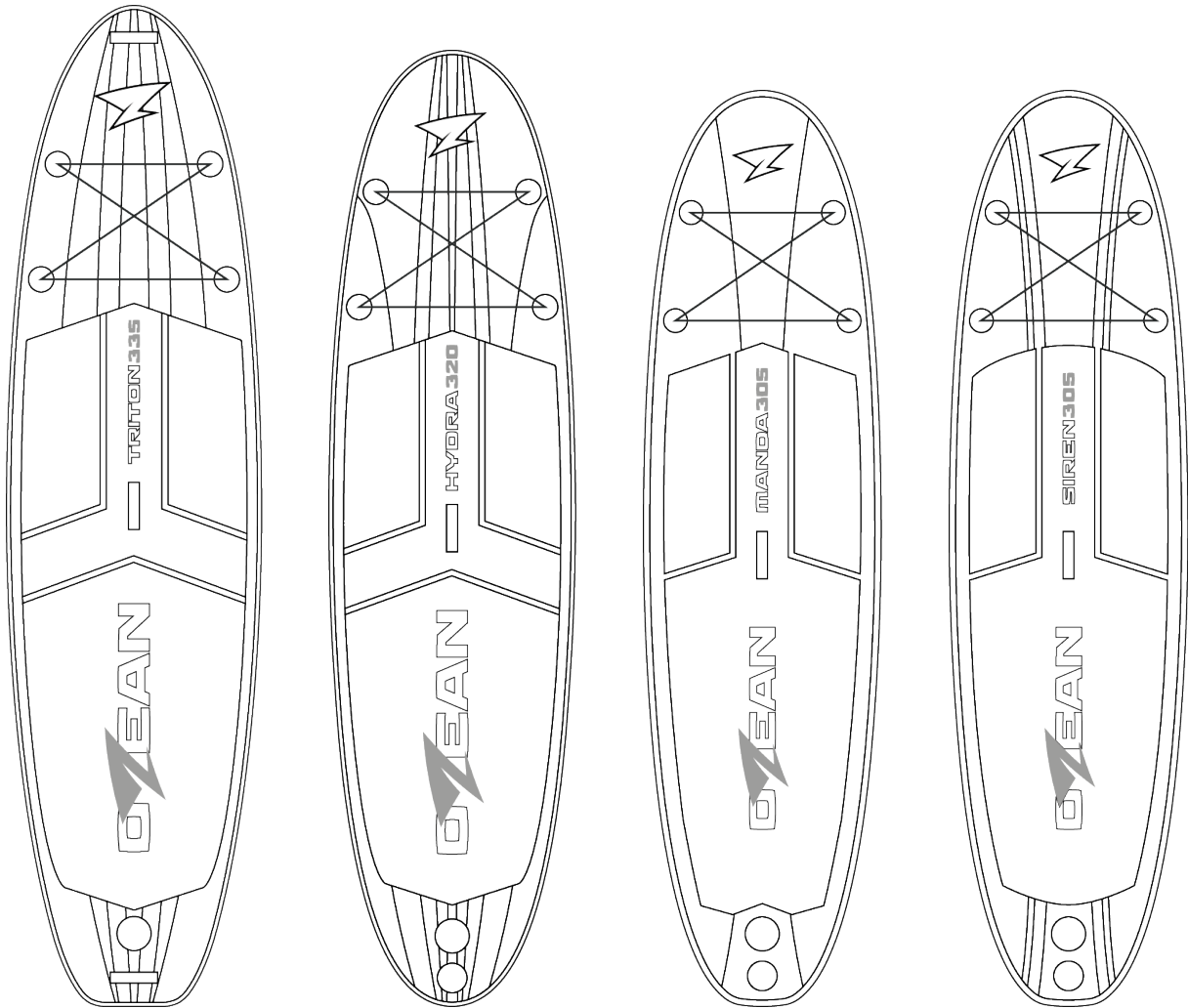




TRITON 335 | HYDRA 320 | MANDA 305 | SIREN 305

USER MANUAL



INFLATABLE STANDUP PADDLE BOARDS **EN**

BEFORE YOU BEGIN

Thank you for choosing the Gymstick Ozean SUP Board. We take great pride in producing this quality product and hope it will make you feel better and enjoy life to its fullest.

TABLE OF CONTENTS

BEFORE YOU BEGIN	1
SAFETY INSTRUCTIONS	2
BOARD GUIDE	3
ACCESSORIES	4
WARNING LABELS	4
INSTALLATION & INFLATION	5
DEFLATION & STORAGE	6
MAINTENANCE	7
IMPLIED WARRANTY	8
OZEAN MODELS	9



IMPORTANT

Read all instructions carefully before using this product.
Retain this owner's manual for future reference.



WARNING

Read and follow all safety instructions.
Failure to follow safety instructions can result in serious injury.

SAFETY INSTRUCTIONS

Basic precautions should always be followed, including the following safety instructions when using this equipment.

READ ALL INSTRUCTIONS BEFORE USING THIS EQUIPMENT

Standup paddleboarding (SUP) can be very dangerous and physically demanding. The user of this product should understand that participating in stand-up paddling may involve serious injury or even death.

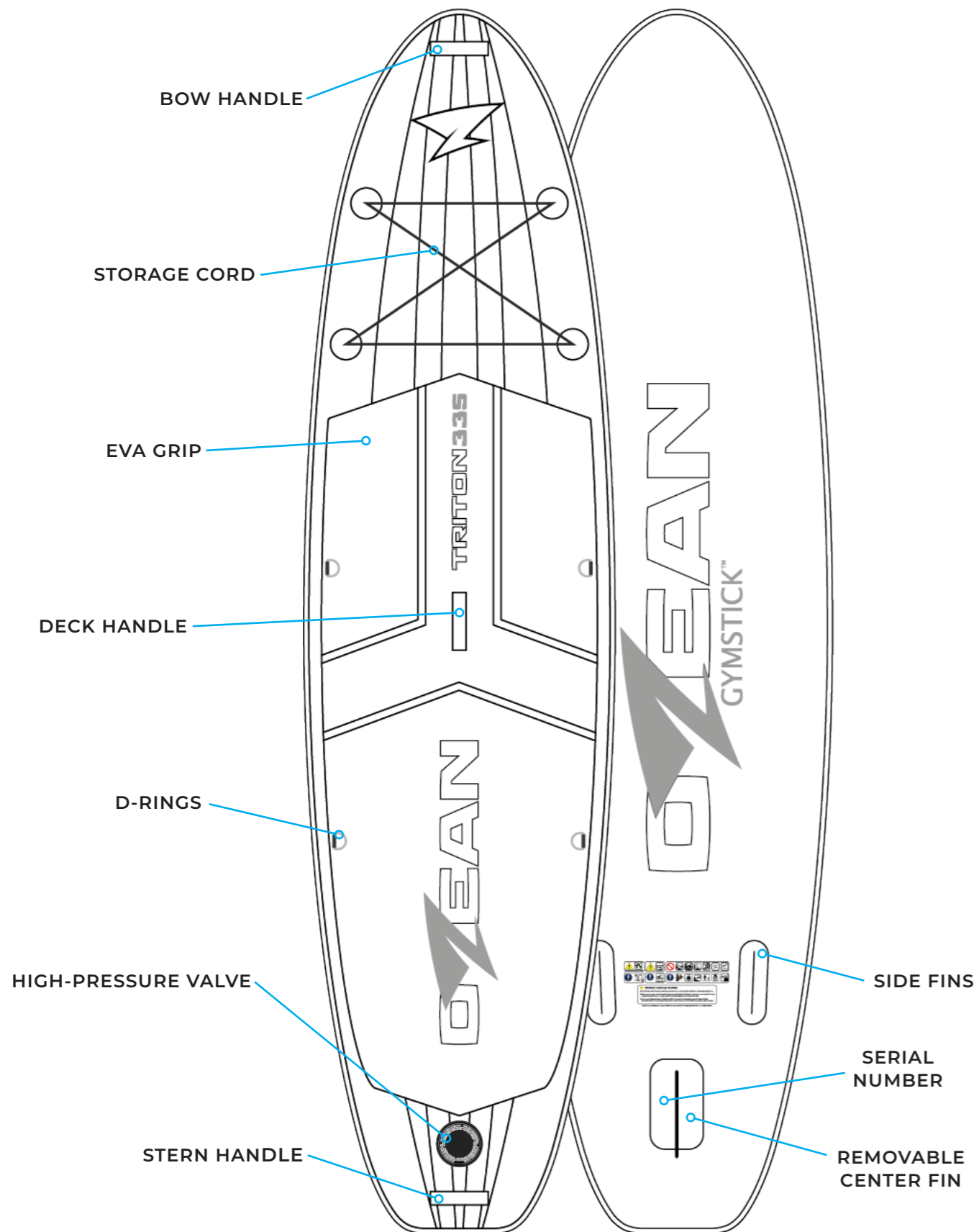
1. Seek SUP instruction from a licensed or certified instructor.
2. Not for children 14 years old and below.
3. Children should always be under adult supervision.
4. Watch out for other beach users especially swimmers and children. Make sure you keep the SUP board and paddle under control at all times.
5. Always use appropriate protective gear and wear a personal flotation device. Wear the correct protective clothing for the conditions such as a wetsuit or a UV top. Cold water or weather can result in hypothermia.
6. Only one person should be on the equipment while in use.
7. Wear a helmet when appropriate.
8. Always check weather forecasts prior to using the SUP board. Never use the SUP board in thunderstorms and lightning conditions.
9. Do not operate the SUP board under the influence of drugs and/or alcohol.
10. This model is designed to be used in lake, rivers and sea shore in standing and seating position. It is not recommended to use the SUP board in high waves nor for surfing.
11. Beware of offshore winds and currents as they can take you out to sea.
12. Check your equipment prior to each use for signs of wear, leaks or failure.
13. Tie the included leash to your SUP board at all times.
14. Always inform someone your paddling route, the time and place of departure and your intended time and place of arrival. Paddling alone is not recommended.
15. Keep away from fire.
16. Do not use around sharp objects.
17. Do not exceed the maximum weight capacity (chart on last page).
18. Do not exceed the maximum air pressure (chart on last page).



WARNING

Before beginning using this product, consult your physician first. This is especially important for individuals over the age of 35 or persons with pre-existing health problems.

BOARD GUIDE



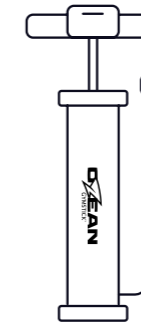
ACCESSORIES



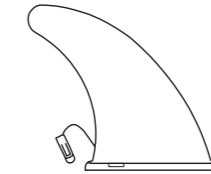
All product features and specifications are subject to change without notice, and may differ slightly from this manual.



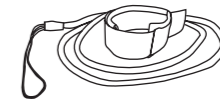
1 x CARRY BACKPACK



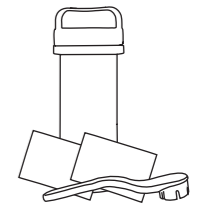
1 x FLOOR PUMP



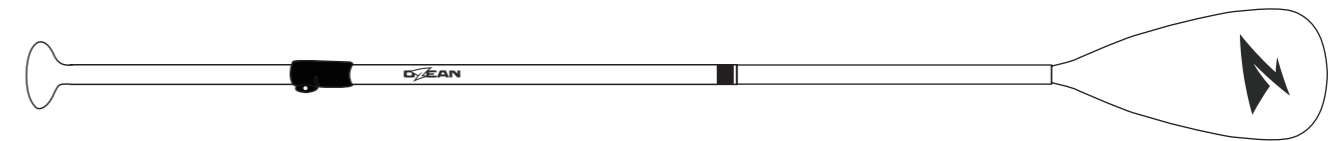
1 x CENTER FIN



1 x SAFETY ANKLE LEASH

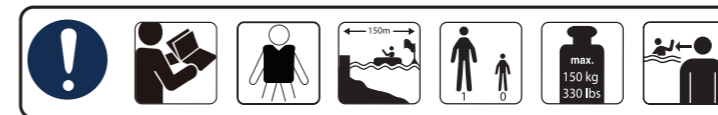


1 x PATCH KIT



1 x ADJUSTABLE PADDLE

WARNING LABELS



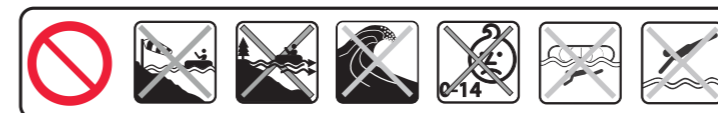
- » Read the instructions first
- » Wear personal floatation
- » Safe distance to shore 150m
- » Maximum number of users
- » Maximum load capacity
- » Always supervise children in water



- » Always fully inflate air chambers



- » Designed working air pressure



- » Do not use in offshore wind
- » Do not use in offshore current
- » Do not use in breaking waves
- » Not for children 14 years or below
- » Do not dive under
- » Do not jump



- » Swimmers only

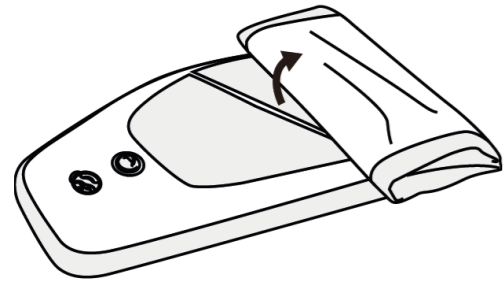


- » No protection against drowning

WARNING!! VAROITUS! VARNING!

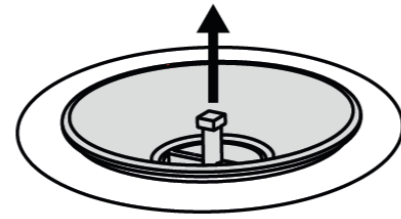
- Not a lifesaving device! Do not overinflate! Read user manual prior to use! Do not dive or jump! Do not swim underneath! Age 14+.
- Tämä tuote ei ole pelastus- eikä kellumisväline! Vain uimataitoisille käyttäjille! Älä ylitäytä! Lue käyttöohjeet ennen käyttöä! Älä sukella tai hyppää välineeltä! Vain yli 14-vuotiaille henkilöille! Pidä kaikki ruumiinosat vedenpinnan yläpuolella!
- Denna produkt är inget räddnings eller flythjälpmedel! Få endast användas av simkunniga personer! Läs igenom följande säkerhetsföreskrifter innan användning! Denna produkt är endast för personer över 14 år! Håll alla kroppsdelar ovanför vattenytan!

INSTALLATION & INFLATION



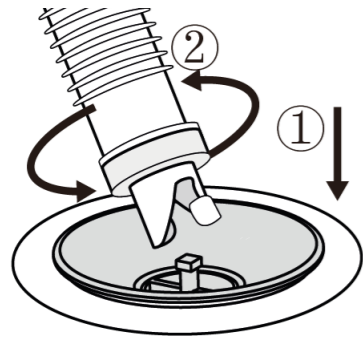
1. UNFOLD BOARD

Unfold your inflatable sup board by placing it flat on the floor and rolling it fully open. Make sure the valve is on the upside before inflating.



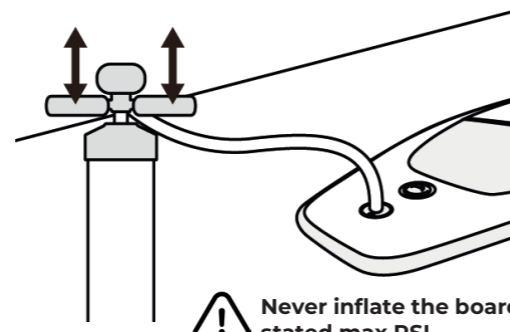
2. ADJUST VALVE

Unscrew the valve lid. Adjust the valve to inflation position, by pulling it upwards. Valve needs to be in up-position to inflate.



3. CONNECT PUMP

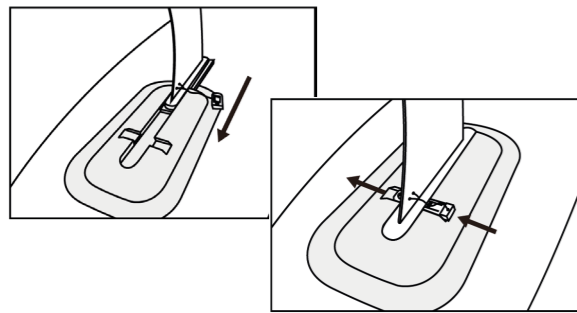
Connect the nozzle of the pump by first placing it on the valve, and then twisting it clockwise until it locks in place.



4. INFLATE BOARD

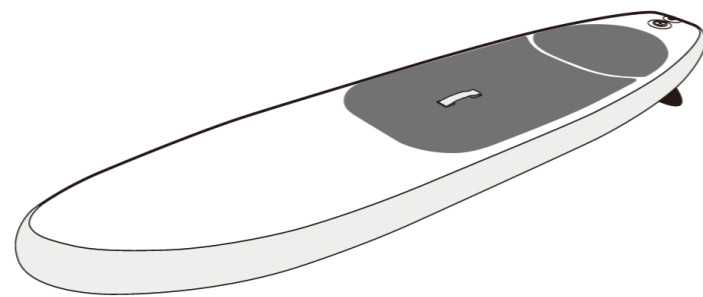
With the nozzle of the pump securely connected, inflate the board fully. (Check the pressure using the PSI meter on the pump and referring to the max. psi found on the back of this manual.)

! Never inflate the board over the stated max PSI



5. ATTACH CENTER FIN

Attach the removable center fin by first sliding it into its designated slot on the underside of the board. To secure the fin, lock it in place by using the locking pin.



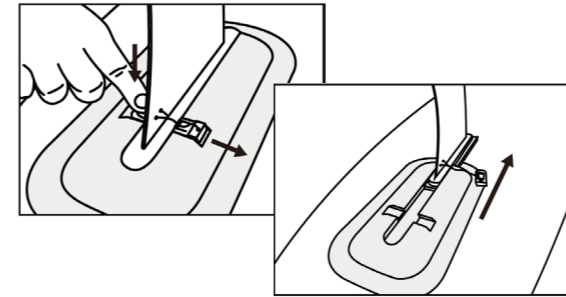
! Always wear the included safety leash! Attach other end to board D-rings

6. INSPECT BOARD

Before entering the water, eye over the board for any visual defects and make sure that the valve, fins and safety leash are intact and securely connected.

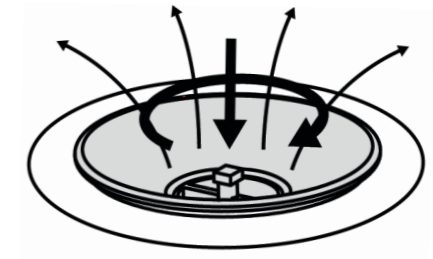
The board is now ready for use. Enjoy your ride!

DEFLATION & STORAGE



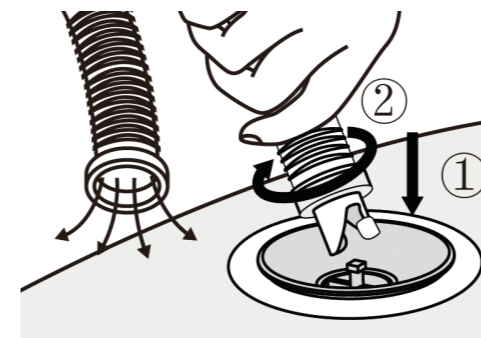
1. REMOVE CENTER FIN

Unlock the center fin on the underside of the board by pressing on the locking pin. Remove the fin by simply sliding it out from its slot.



2. ADJUST VALVE

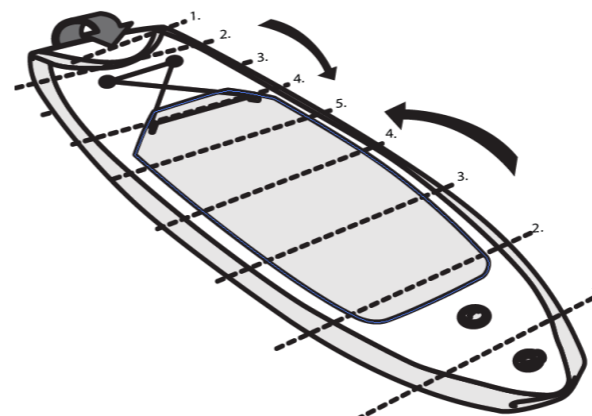
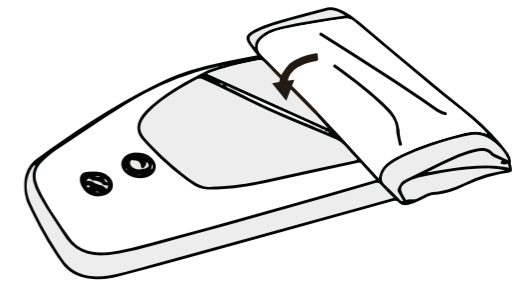
Unscrew the valve lid. Adjust the valve to deflation position, by pushing it downwards. Valve needs to be in down-position to deflate.



3. DEFLATE BOARD

To deflate the board, attach the pump nozzle by placing it on the valve and twisting clockwise until it locks in place. Use the pump in deflate mode. If the pump does not have deflate mode, make sure the valve is unblocked when deflating the board.

To easily get the air out of the board, roll it with your hands on the ground, or roll it around the pump.



4. FOLD FOR STORAGE

Fold the deflated sup board starting from both ends to minimize space required for storage. Most convenient way to store the board is placing it inside the included carry backpack with the accessories.

MAINTENANCE



IMPORTANT

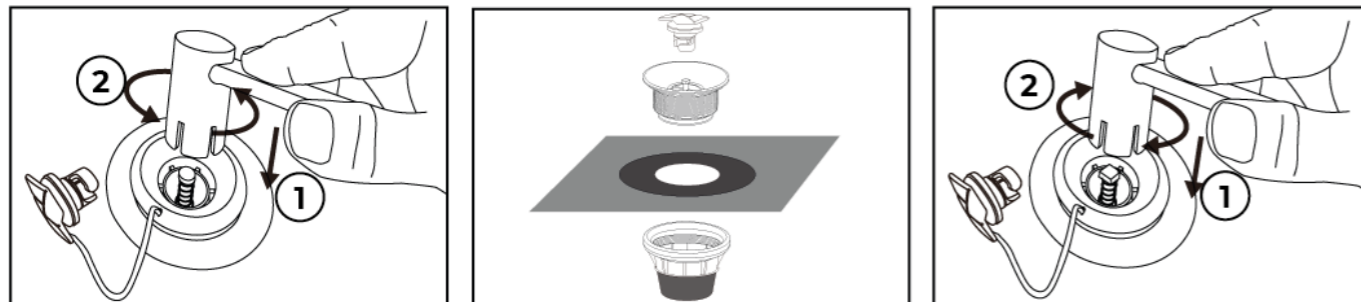
- Do not leave your SUP board under direct sunlight as it may cause over-inflation.
- Clean your board always after using it to prevent damage from sand, salt water or prolonged sun exposure. Use fresh water and mild soap when needed.
- Drain the water from the paddle shaft after each usage.
- Remember to check the air pressure before and after use, and deflate your board when needed.
- Dry the board after each use, especially when storing to avoid mould damage.
- Long-term storage is not suggested, because it may cause adhesive failure.
- Regularly check for any defects and repair if necessary.
- Using air compressor is not allowed because it can easily over-inflate the board.
- Always carry your board, as sharp debris may puncture it when dragging.
- Store your board at room temperature between 0°C - 40°C, away from direct sunlight in a dry place.

HOW TO REPAIR

1. Locate the puncture.
2. Use acetone to clean the area around the puncture.
3. Cut the patch to suitable size. Note that the patch needs to cover the puncture with approx. 25mm overlap on all sides.
4. Spread glue on the patch and board. Check that the glue is spread completely and evenly. Let the glue dry for 5 minutes.
5. Place the patch on the puncture. Use firm pressure and a suitable metal or plastic plate to remove any air bubbles.
6. Let the glue dry for 24 hours before inflating the board.
7. Check for any defects before using the board again.

REPLACING THE VALVE

If the valve is broken or leaky. Follow the below instruction on how to replace the valve.



IMPLIED WARRANTY

The importer of this product assures that this device is manufactured with high quality materials.

The prerequisite for the implied warranty is the proper setup in accordance with the operating instructions. Improper use and /or incorrect transportation and storage can void the warranty.

The implied warranty is valid for 1 year, beginning from the date of purchase. For eventual defects please contact the dealer of this product within the guarantee period.

The warranty applies to all parts (as far as included in the scope of delivery).

The warranty does not cover:

- Damage caused by outer force or improper storage
- Misuse, abuse or neglect
- Normal wear and tear
- Exceeding the maximum weight capacity
- Incorrect handling of the product
- Non-compliance of the operating instructions

The device is intended for normal recreational activities.
Not intended for rental or any kind of professional usage.

MANUFACTURED FOR

Gymstick International
Ratavirtijankatu 11, 15170 Lahti
info@gymstick.com
+358 10 229 3040
FINLAND

DISCLAIMER

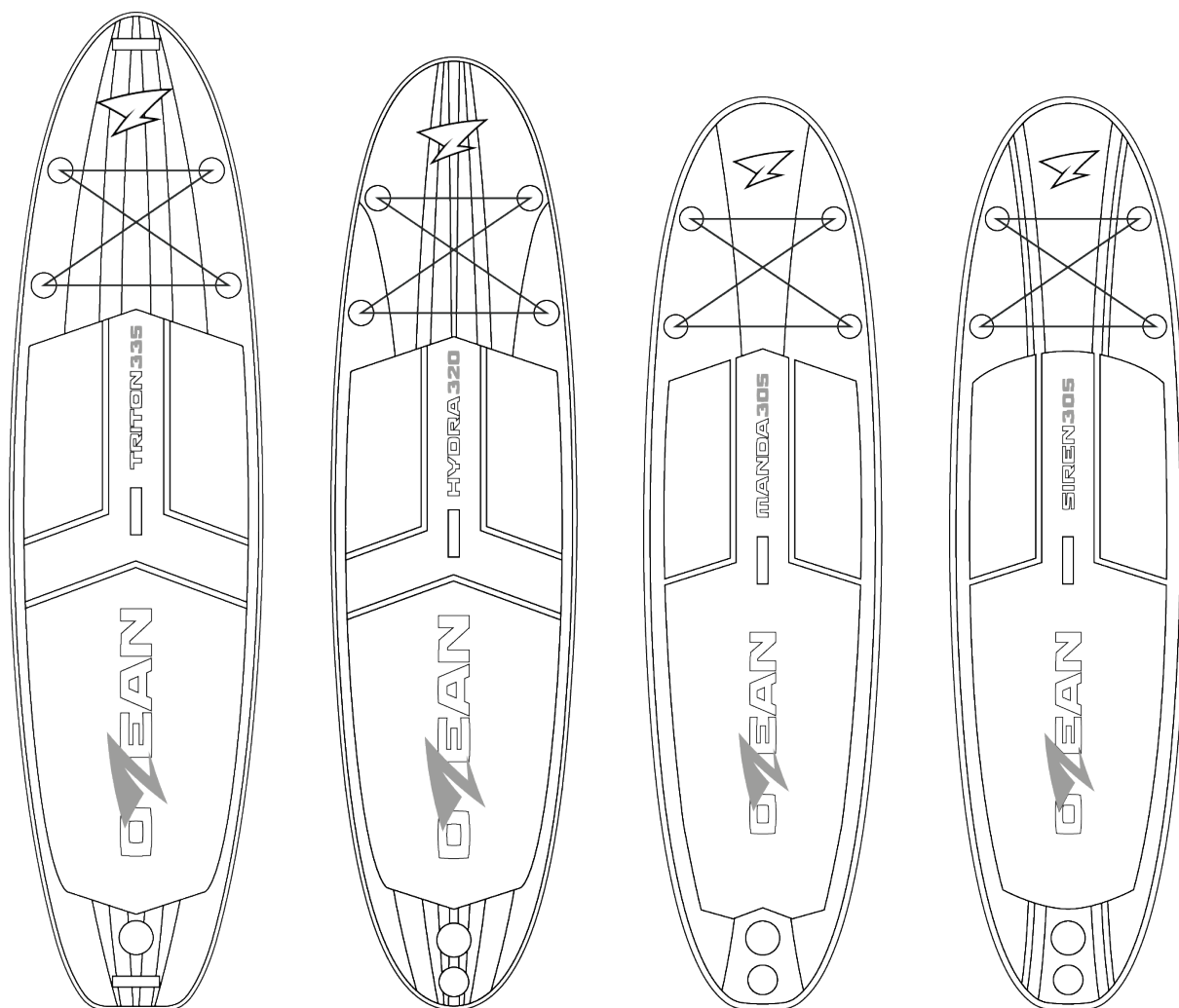
The manufacturer Gymstick International Oy has no responsibility to any persons or entity for any loss, damage sequence alleges to have happened directly or indirectly as a consequent of this product.



Products marked with these symbols must be disposed of separately from your household waste, as they contain valuable materials which can be recycled. Proper disposal protects the environment and human health. Your local authority or retailer can provide more information on the matter.



OZEAN MODELS



NAME	TRITON ³³⁵	HYDRA ³²⁰	MANDA ³⁰⁵	SIREN ³⁰⁵
TYPE	TOURING	ALL-AROUND	ALL-AROUND	ALL-AROUND
MATERIAL	MULTI-LAYER	MULTI-LAYER	SINGLE-LAYER	SINGLE-LAYER
SKU	51004-BR	51003-BB	51002-TB	51001-LG
EAN	6430016900157	6430016900065	6430016900041	6430016900003
SIZE	335 x 83 x 15 cm	320 x 80 x 15 cm	305 x 76 x 15 cm	305 x 76 x 15 cm
FIN	3 FINS	3 FINS	3 FINS	3 FINS
MAX PSI	20 PSI / 1.3 BAR	20 PSI / 1.3 BAR	15 PSI / 1.0 BAR	15 PSI / 1.0 BAR
MAX LOAD	150 KG	135 KG	100 KG	100 KG